

# CHAPTER 4. PARTS CATALOG

## CONTENTS

### EOSD30

Terminal cover, Main battery cover, Grip rubber, Rear rubber, Eye-cup -----	Pg1
Front cover -----	Pg2
Rear cover -----	Pg3
Rear cover block -----	Pg4
Grip, Bottom cover, Top cover -----	Pg5
Top cover block -----	Pg6
Rear frame, Eyepiece cover, Strap holder -----	Pg7
OLC unit, TFT board, TFT LCD unit -----	Pg8
D board, CF FPC unit, Right cover, DRSW FPC -----	Pg9
C MOS sensor, A board -----	Pg10
DC/DC board, MD FPC, AF auxiliary indicator, Right body -----	Pg11
Left body unit (SP LIGHT board, RMC terminal/FPC, STR FPC) -----	Pg12
FRONT FPC, Front panel unit, Main dial, Min battery case -----	Pg13
Eyepiece lens, SPC unit, Shutter unit, C-MAIN board, ILC unit, AF unit -----	Pg14
Focusing plate, Lens mount, Contacting-point base unit -----	Pg15

ELECTRICAL PARTS LIST -----	Pg16
-----------------------------	------

ACCESSORIES SECTION -----	Pg17
---------------------------	------

INDEX EOSD30 -----	Pg18
--------------------	------

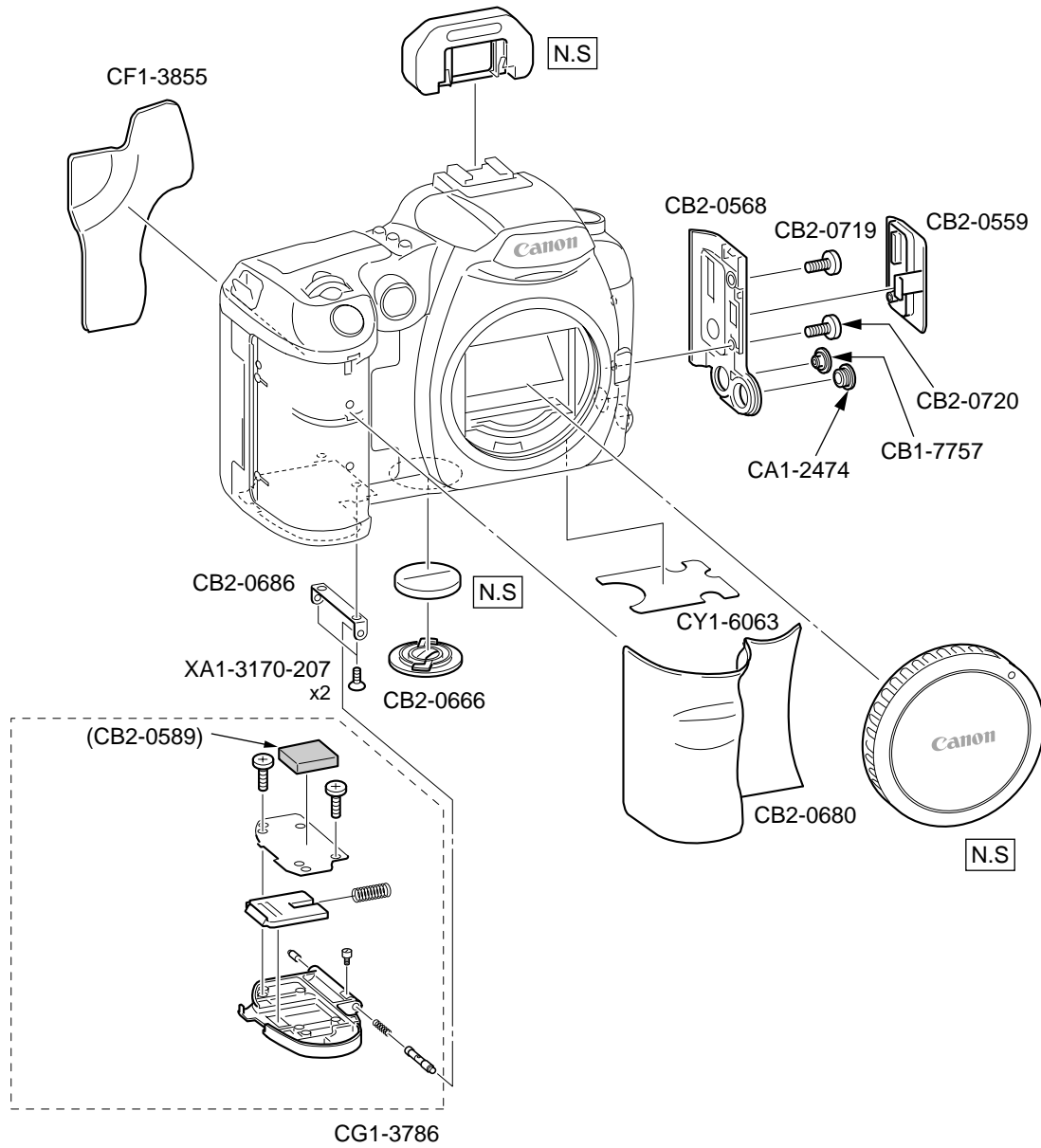
### BG-ED3

Contact PCB, Contact base -----	Pg21
Release PCB, Grip ON/OFF switch ass'y -----	Pg22
Battery door cover, box (L, R) ass'y -----	Pg23

INDEX BG-ED3 -----	Pg24
--------------------	------

## CANON EOSD30

C18-1021



**N.S.**: N.S Stand for No Stock

# PARTS LIST

Pg1

REF.NO. C18-1021

NEW	PARTS NO.	CLASS	QTY	DESCRIPTION
	CA1-2474-000	B	1	CAP, PC TERMINAL
	CB1-7757-000	B	1	CAP, REMOTE
*	CB2-0559-000	B	1	CAP, DIGITAL TERMINAL
*	CB2-0568-000	C	1	COVER, DIGITAL TERMINAL
*	CB2-0589-000	C	1	CUSHION
*	CB2-0666-000	C	1	COVER, DATE BATTERY
*	CB2-0680-000	B	1	RUBBER, GRIP
*	CB2-0686-000	C	1	HINGE, B-DOOR
*	CB2-0719-000	C	1	SCREW M17X5.5
*	CB2-0720-000	C	1	SCREW M17X6
*	CF1-3855-000	B	1	RUBBER, BACK
*	CG1-3786-000	B	1	DOOR ASS'Y, MAIN BATTERY
*	CY1-6063-000	B	1	PLATE, NAME
	XA1-3170-207	F	2	SCREW M17X2

## CLASS凡例

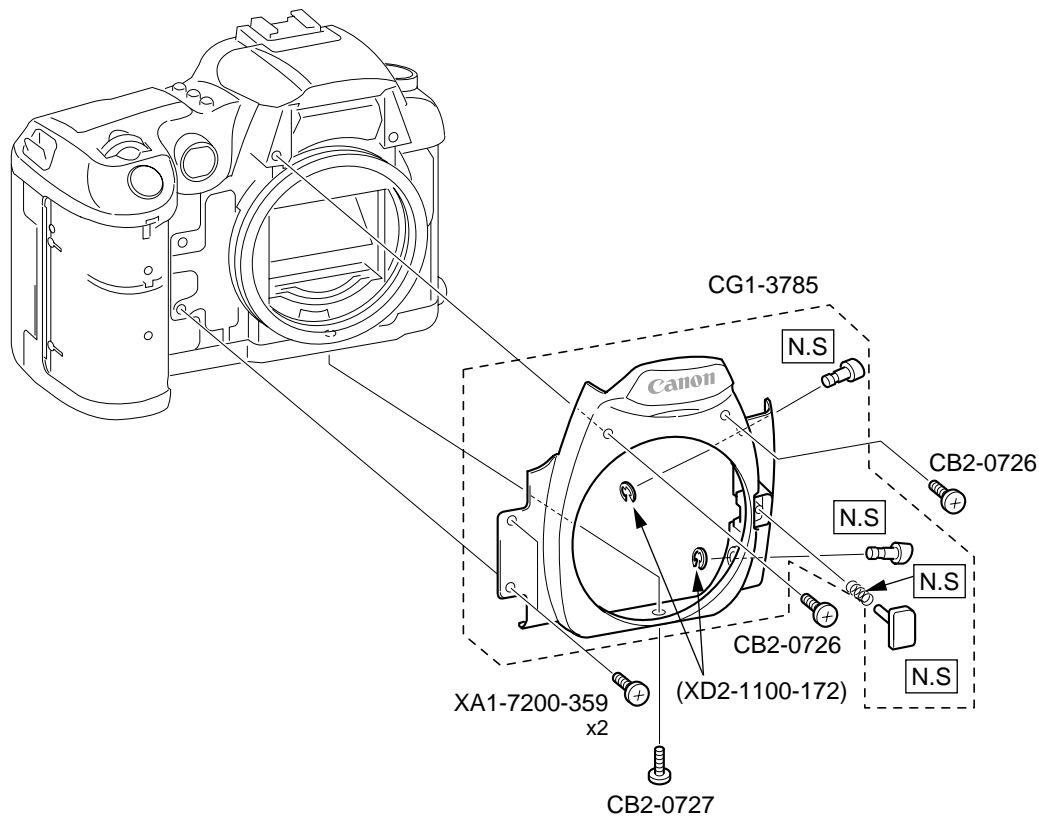
A: 使用頻度 高  
 B: 使用頻度 中  
 C: 使用頻度 低  
 D: 安全規格部品  
 E: 消耗部品  
 F: 標準ネジ、ワッシャー  
 S: 供給制限品

## Category of CLASS

A: Frequency of use: High  
 B: Frequency of use: Middle  
 C: Frequency of use: Low  
 D: Safety-related critical parts  
 E: Consumable parts  
 F: Standard screws and washers  
 S: Supply of the parts is limited

CANON EOSD30

C18-1021



# PARTS LIST

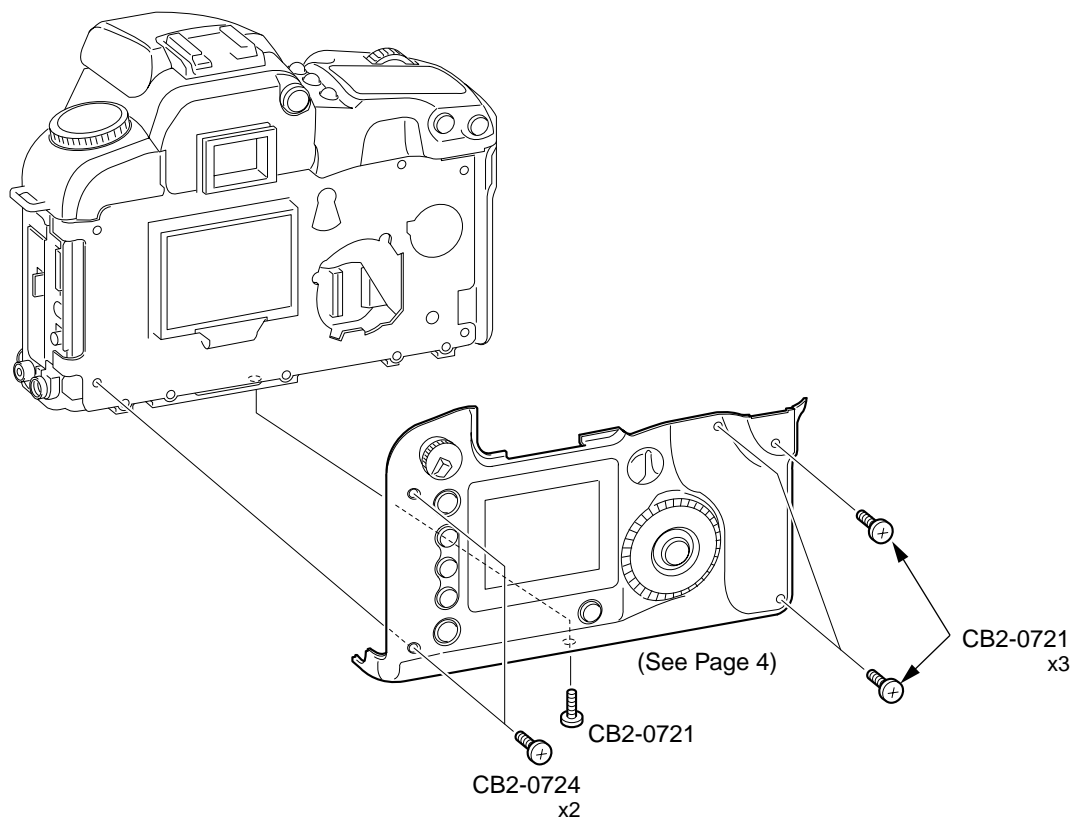
Pg2

REF.NO. C18-1021

NEW	PARTS NO.	CLASS	QTY	DESCRIPTION
*	CB2-0726-000	C	2	SCREW M17X5.5
*	CB2-0727-000	C	1	SCREW M17X4.5
*	CG1-3785-000	B	1	COVER ASS'Y, FRONT
	XA1-7200-359	F	2	SCREW M2X3.5
	XD2-1100-172	F	2	E RING

CANON EOSD30

C18-1021



# PARTS LIST

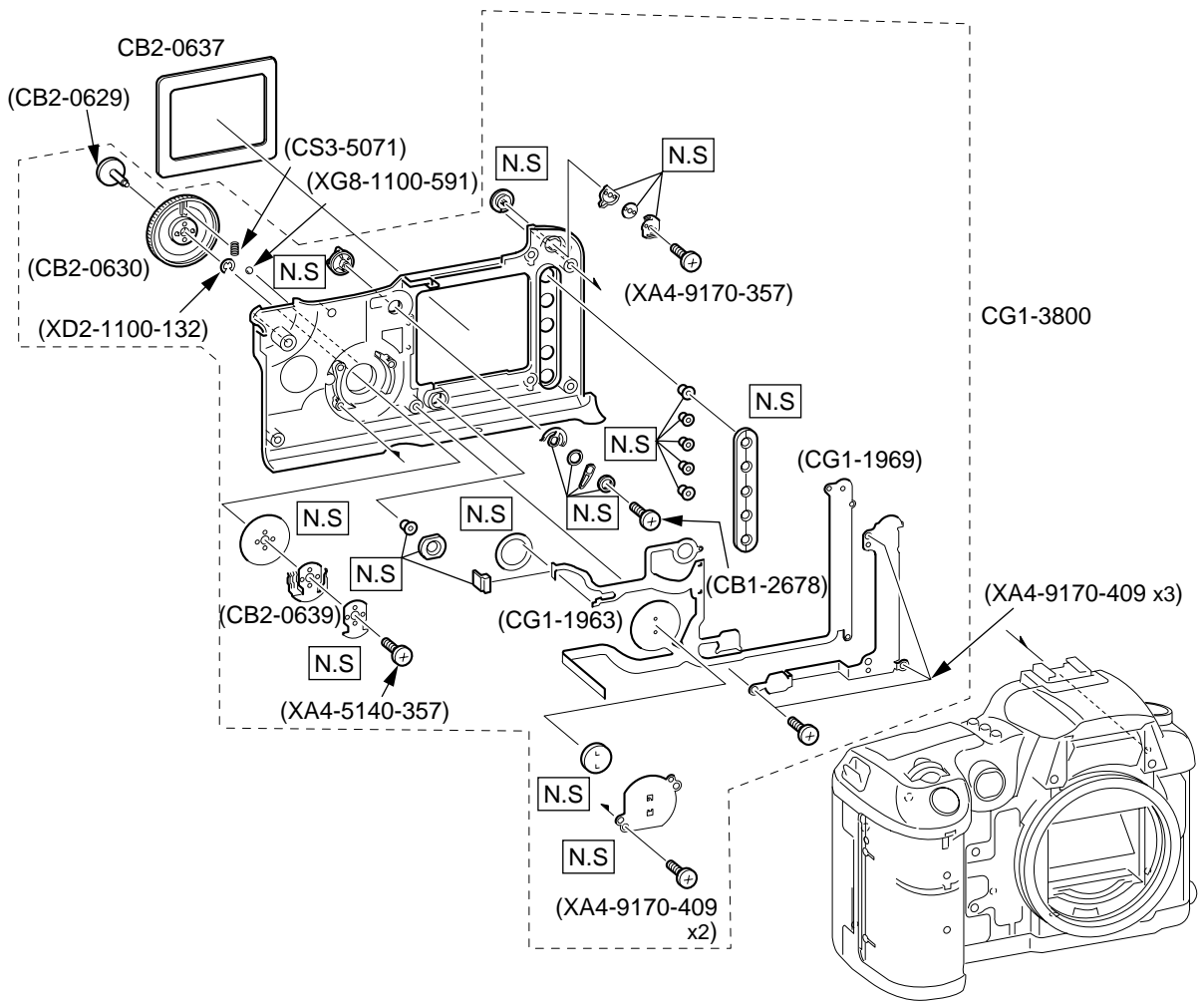
Pg3

REF.NO. C18-1021

NEW	PARTS NO.	CLASS	QTY	DESCRIPTION
*	CB2-0721-000	C	4	SCREW M17X2.5
*	CB2-0724-000	C	2	SCREW M17X4.5

CANON EOSD30

C18-1021





# PARTS LIST

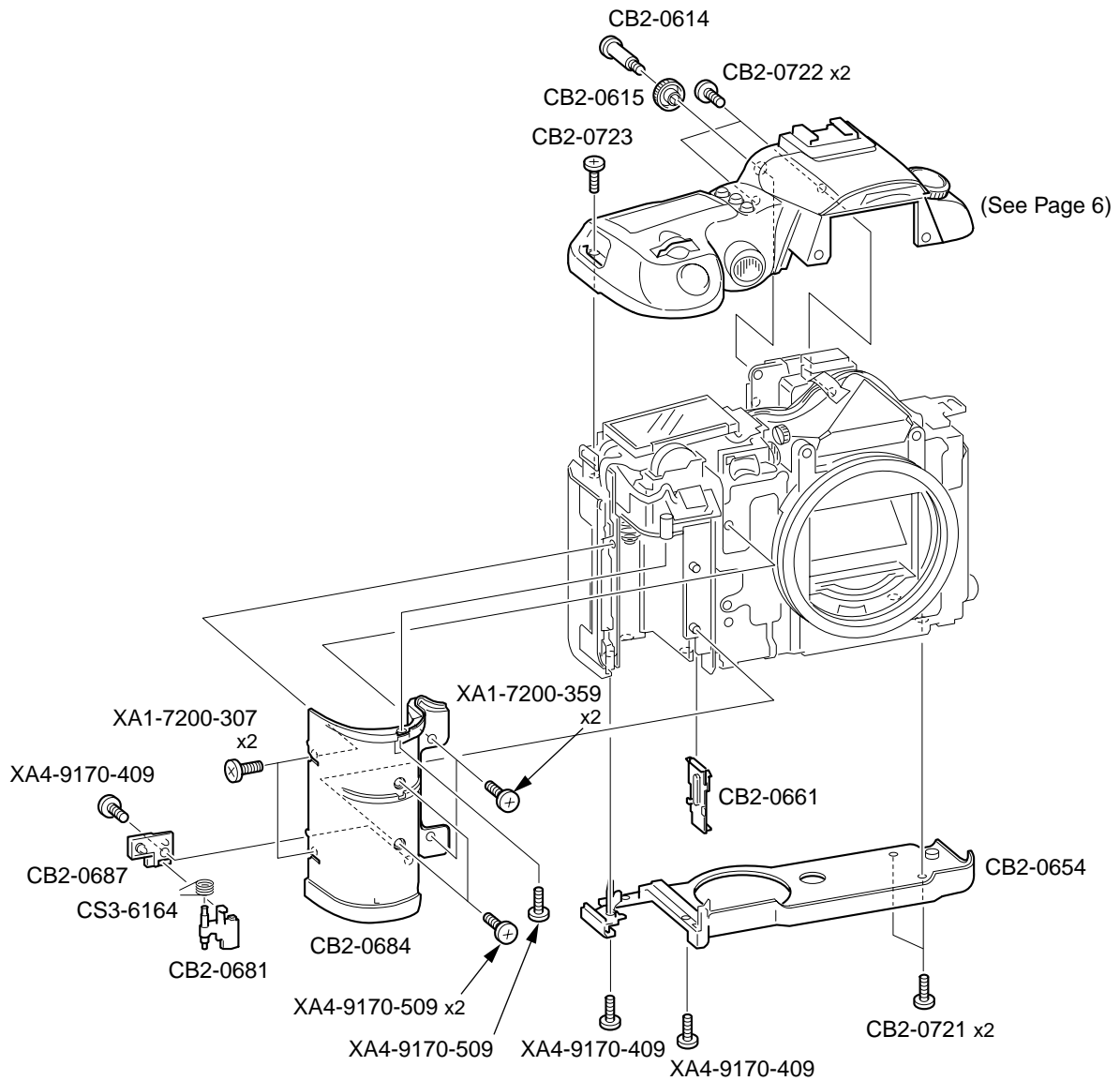
Pg4

REF.NO. C18-1021

NEW	PARTS NO.	CLASS	QTY	DESCRIPTION
	CB1-2678-000	C	1	SCREW M17X2.5
*	CB2-0629-000	C	1	BUTTON, BC DIAL
*	CB2-0630-000	C	1	DIAL, BACK COVER
*	CB2-0637-000	B	1	WINDOW, TFT LCD
*	CB2-0639-000	C	1	CONTACT, BC DIAL
*	CG1-1963-000	C	1	FPC ASS'Y, BUZZER
*	CG1-1969-000	C	1	FPC ASS'Y, BACK COVER
*	CG1-3800-000	B	1	COVER ASS'Y, BACK
*	CS3-5071-000	C	1	SPRING, COIL
	XA4-5140-357	F	1	SCREW M14X3.5
	XA4-9170-357	F	1	SCREW M17X3.5
	XA4-9170-409	F	5	SCREW M17x4
	XD2-1100-132	F	1	E RING
	XG8-1100-591	F	1	BALL, STEEL

## CANON EOSD30

C18-1021



# PARTS LIST

Pg5

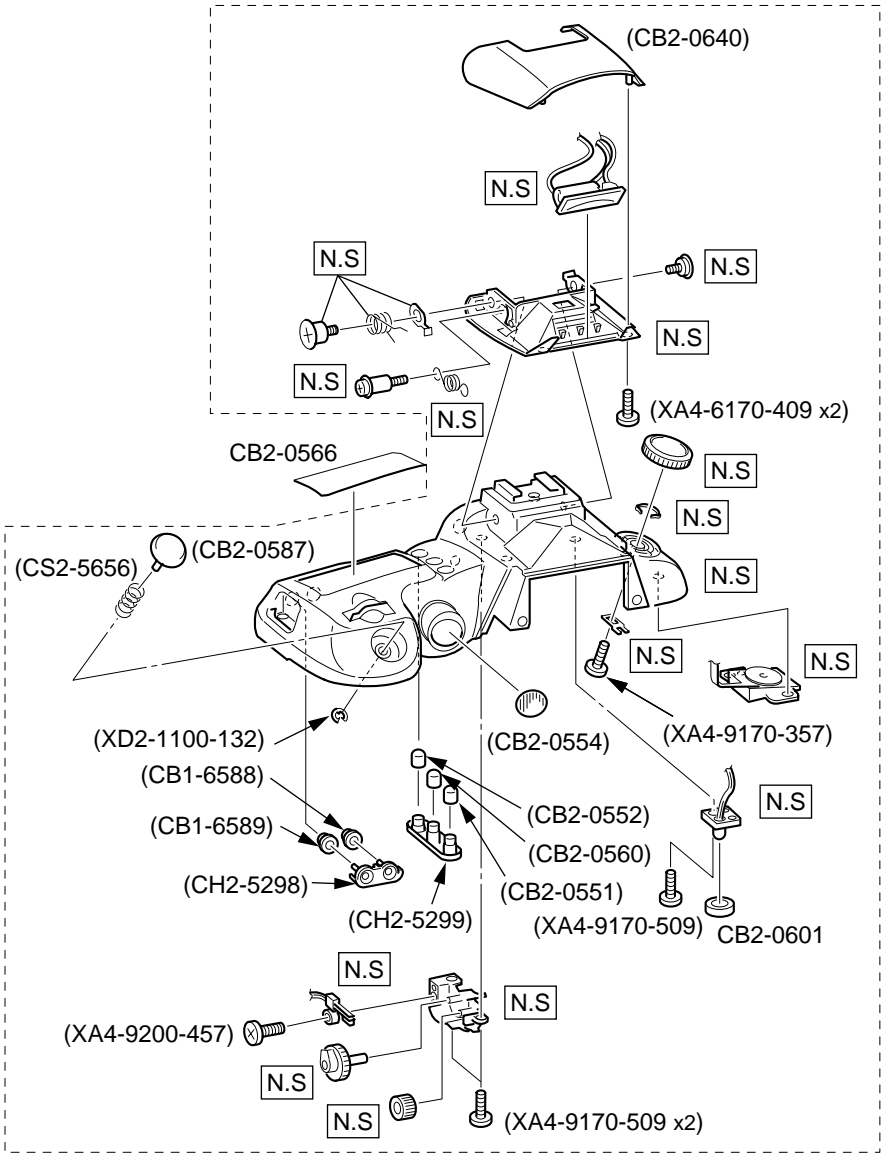
REF.NO. C18-1021

NEW	PARTS NO.	CLASS	QTY	DESCRIPTION
*	CB2-0614-000	C	1	SCREW, STEP
*	CB2-0615-000	C	1	KNOB, DIOPTOR ADJ.
*	CB2-0654-000	B	1	COVER, BOTTOM
*	CB2-0661-000	C	1	DOOR, CABLE
*	CB2-0681-000	C	1	LEVER, B-LOCK
*	CB2-0684-000	C	1	GRIP
*	CB2-0687-000	C	1	PLATE, B-LOCK
*	CB2-0721-000	C	2	SCREW M17X2.5
*	CB2-0722-000	C	2	SCREW M17X5
*	CB2-0723-000	C	1	SCREW M2X6.5
*	CS3-6164-000	C	1	SPRING, B-LOCK
	XA1-7200-307	F	2	SCREW M2X3
	XA1-7200-359	F	2	SCREW M2X3.5
	XA4-9170-409	F	3	SCREW M17x4
	XA4-9170-509	F	3	SCREW M17X5

CANON EOSD30

C18-1021

CG1-3774



# PARTS LIST

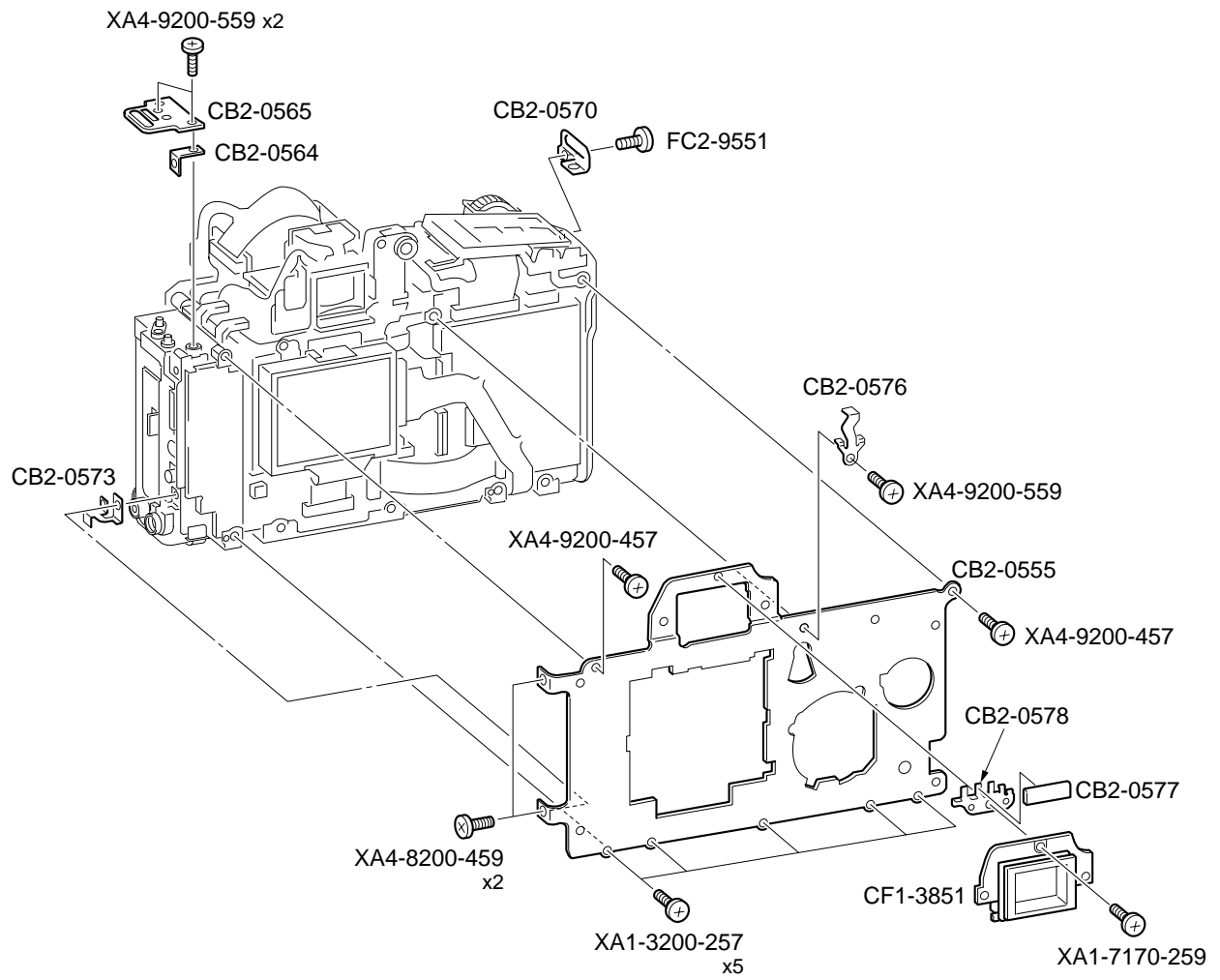
Pg6

REF.NO. C18-1021

NEW	PARTS NO.	CLASS	QTY	DESCRIPTION
	CB1-6588-000	C	1	BUTTON, AE-LOCK
	CB1-6589-000	C	1	BUTTON, AF-SELECT
*	CB2-0551-000	C	1	BUTTON, AE MODE
*	CB2-0552-000	C	1	BUTTON, AF MODE
*	CB2-0554-000	C	1	WINDOW, SUPPORT LIGHT
*	CB2-0560-000	C	1	BUTTON, DRIVE
*	CB2-0566-000	B	1	WINDOW, LCD DISPLAY
*	CB2-0587-000	C	1	BUTTON, RELEASE
*	CB2-0601-000	C	1	CUSHION, FIBER
*	CB2-0640-000	B	1	COVER, SP LIGHT
*	CG1-3774-000	C	1	COVER ASS'Y, TOP
*	CH2-5298-000	C	1	CONTACT, AE/AF SWITCH
*	CH2-5299-000	C	1	CONTACT, TOP SWITCH
	CS2-5656-000	C	1	SPRING, COIL
	XA4-6170-409	F	2	SCREW M17X4
	XA4-9170-357	F	1	SCREW M17X3.5
	XA4-9170-509	F	3	SCREW M17X5
	XA4-9200-457	F	1	SCREW M2X4.5
	XD2-1100-132	F	1	E RING

## CANON EOSD30

C18-1021



# PARTS LIST

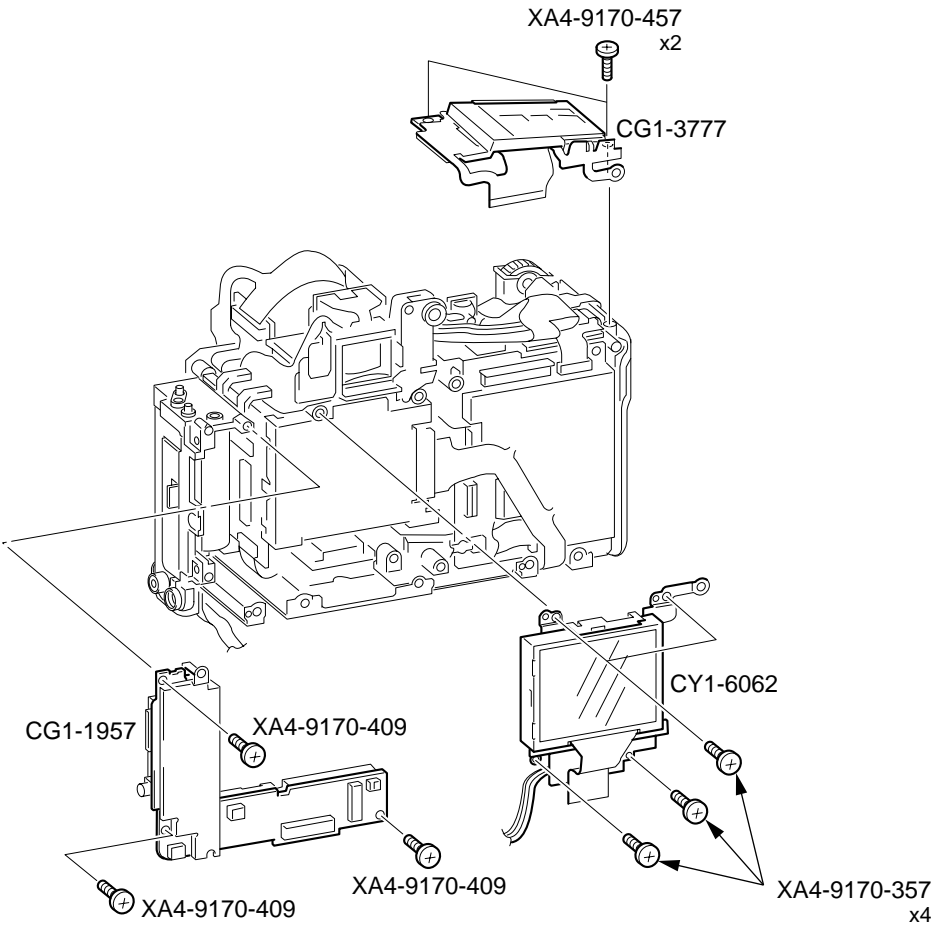
Pg7

REF.NO. C18-1021

NEW	PARTS NO.	CLASS	QTY	DESCRIPTION
*	CB2-0555-000	C	1	FRAME, REAR
*	CB2-0564-000	C	1	RAG, NECK
*	CB2-0565-000	C	1	HOLDER, STRAP L
*	CB2-0570-000	C	1	HOLDER, STRAP R
*	CB2-0573-000	C	1	RAG, REMOTE
*	CB2-0576-000	C	1	RAG, DISPLAY SUPPORT
*	CB2-0577-000	C	1	SHEET, SHIELD
*	CB2-0578-000	C	1	HOLDER, SHIELD SHEET
*	CF1-3851-000	C	1	COVER ASS'Y, EYEPiece
	FC2-9551-000	C	1	SCREW M2X2.5
	XA1-3200-257	F	5	SCREW M2X2.5
	XA1-7170-259	F	1	SCREW M17X2.5
	XA4-8200-459	F	2	SCREW M2X4.5
	XA4-9200-457	F	2	SCREW M2X4.5
	XA4-9200-559	F	3	SCREW M2X5.5

CANON EOSD30

C18-1021





# PARTS LIST

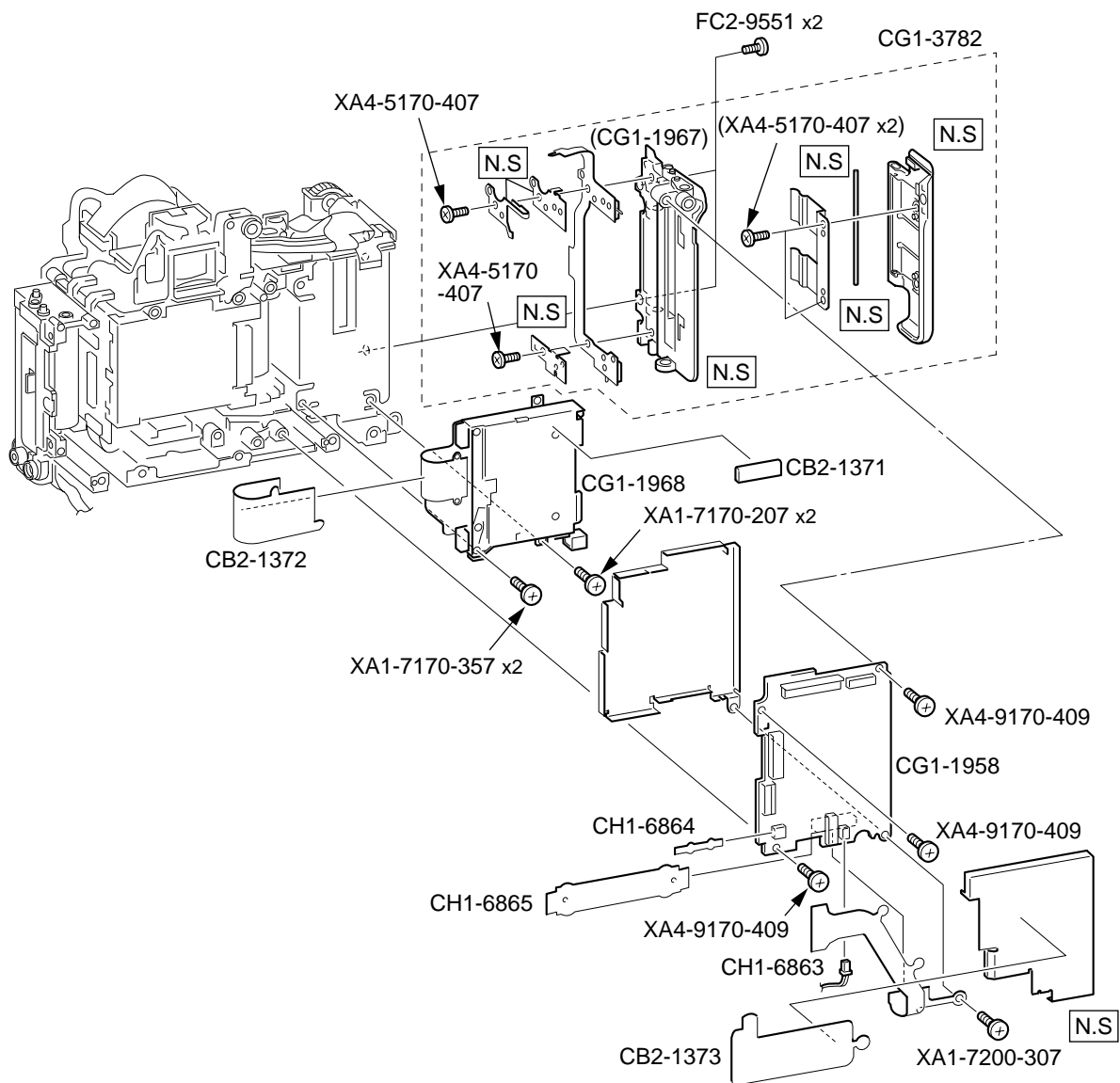
Pg8

REF.NO. C18-1021

NEW	PARTS NO.	CLASS	QTY	DESCRIPTION
*	CG1-1957-000	C	1	PCB ASS'Y, TFT
*	CG1-3777-000	C	1	OLC DISPLAY ASS'Y
*	CY1-6062-000	C	1	TFT LCD ASS'Y
	XA4-9170-357	F	4	SCREW M17X3.5
	XA4-9170-409	F	3	SCREW M17x4
	XA4-9170-457	F	2	SCREW M17X4.5

## CANON EOSD30

C18-1021



# PARTS LIST

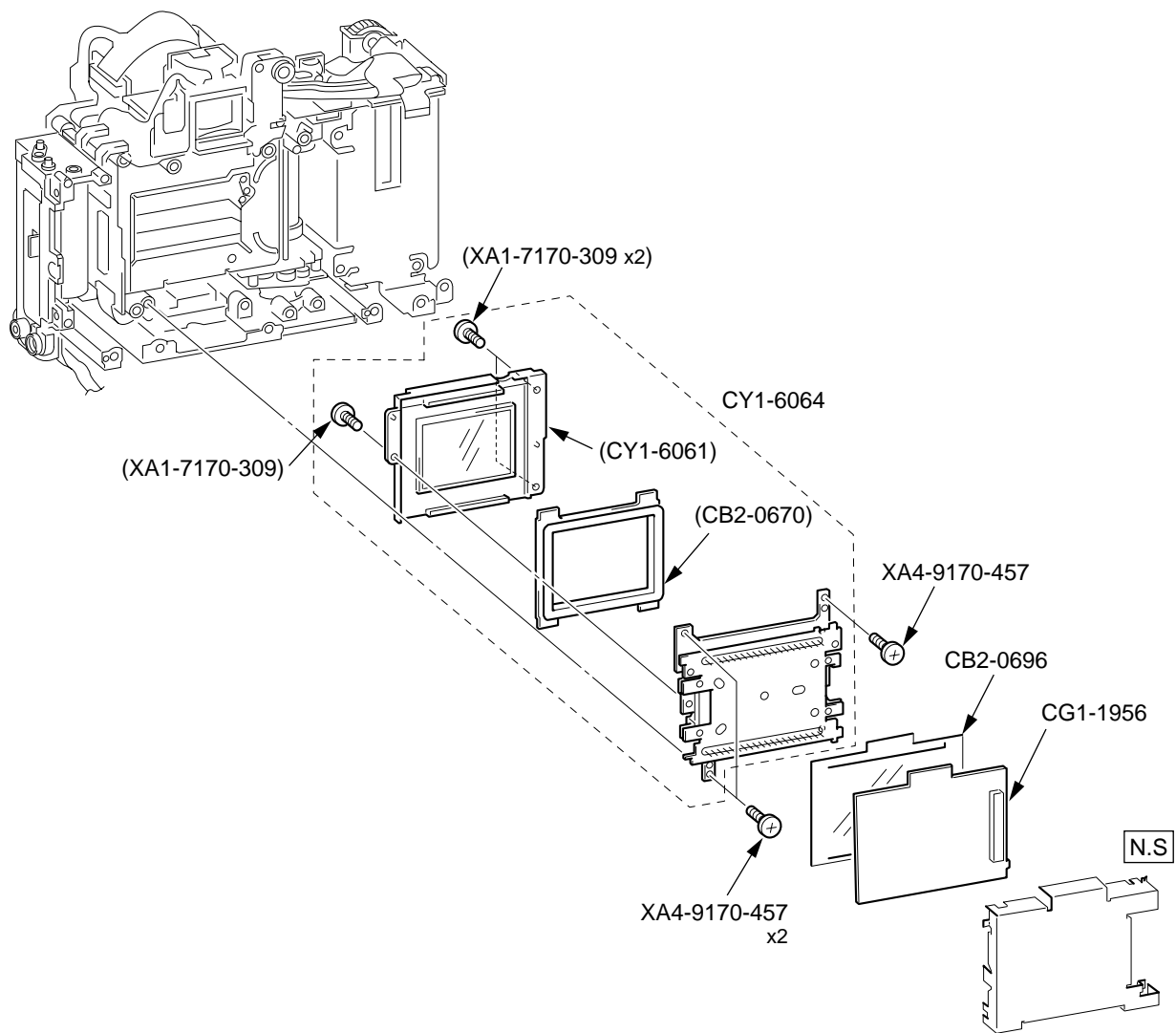
Pg9

REF.NO. C18-1021

NEW	PARTS NO.	CLASS	QTY	DESCRIPTION
*	CB2-1371-000	C	1	CUSHION
*	CB2-1372-000	C	1	SHEET, SHIELD
*	CB2-1373-000	C	1	SHEET, SHIELD
*	CG1-1958-000	C	1	PCB ASS'Y, DIGITAL
*	CG1-1967-000	C	1	FPC ASS'Y, DOOR DET.SWITCHES
*	CG1-1968-000	C	1	FPC ASS'Y CF
*	CG1-3782-000	B	1	COVER ASS'Y, RIGHT SIDE
*	CH1-6863-000	C	1	FPC (ANALOG-DIGITAL)
*	CH1-6864-000	C	1	FPC (DIGITAL-TFT)
*	CH1-6865-000	C	1	FPC (DIGITAL-CAMERA MAIN)
	FC2-9551-000	C	2	SCREW M2X2.5
	XA1-7170-207	F	2	SCREW M17X2
	XA1-7170-357	F	2	SCREW M17X3.5
	XA1-7200-307	F	1	SCREW M2X3
	XA4-5170-407	F	4	SCREW M17X4
	XA4-9170-409	F	3	SCREW M17x4

CANON EOSD30

C18-1021



# PARTS LIST

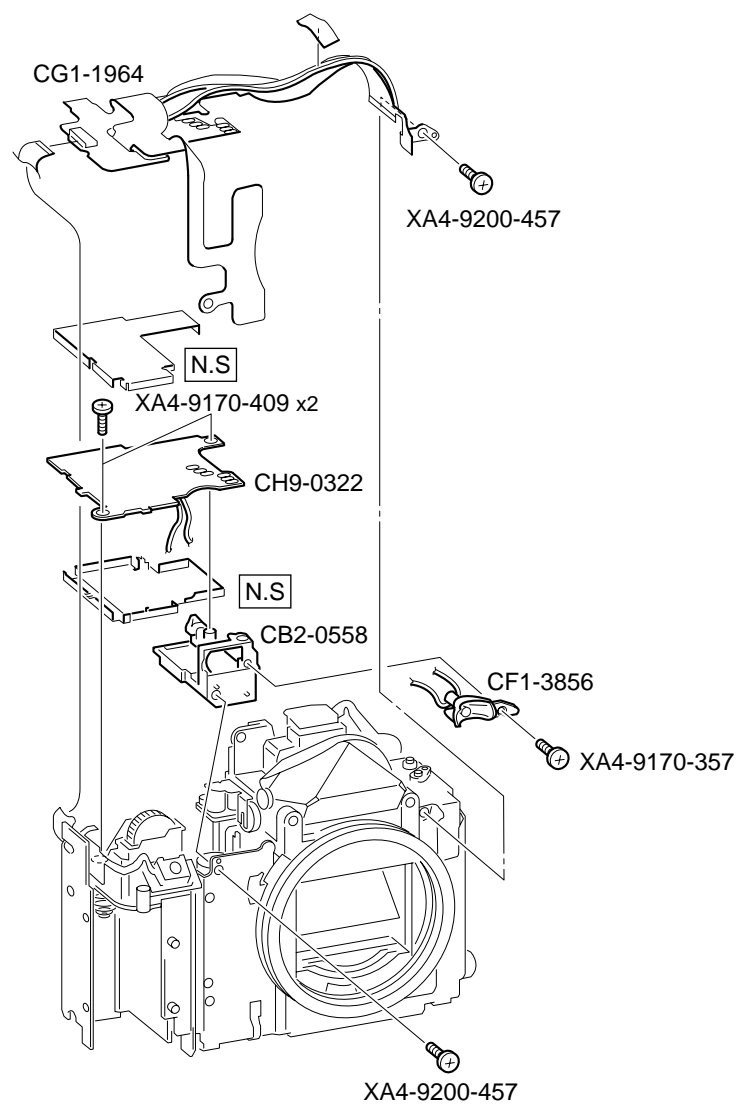
Pg10

REF.NO. C18-1021

NEW	PARTS NO.	CLASS	QTY	DESCRIPTION
*	CB2-0670-000	C	1	SHIELD, C-MOS RUBBER
*	CB2-0696-000	C	1	SHEET, ANALOG PCB
*	CG1-1956-000	C	1	PCB ASS'Y, ANALOG
*	CY1-6061-000	C	1	FILTER, IR/LPF
*	CY1-6064-000	C	1	C-MOS ASS'Y
	XA1-7170-309	F	3	SCREW M17X3
	XA4-9170-457	F	3	SCREW M17x4

CANON EOSD30

C18-1021



# PARTS LIST

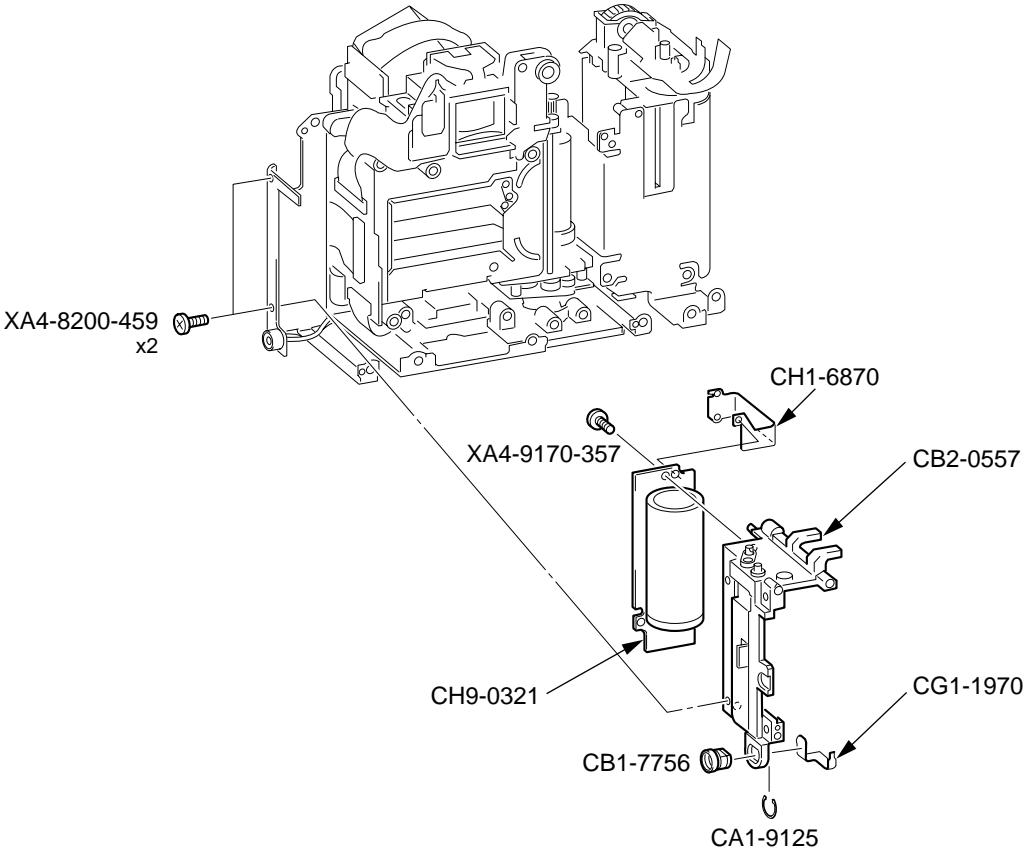
Pg11

REF.NO. C18-1021

NEW	PARTS NO.	CLASS	QTY	DESCRIPTION
*	CB2-0558-000	C	1	BODY, RIGHT
*	CF1-3856-000	C	1	LAMP ASS'Y, AF SUPPORT
*	CG1-1964-000	C	1	FPC ASS'Y, MD
*	CH9-0322-000	C	1	PCB ASS'Y, DC/DC
	XA4-9170-357	F	1	SCREW M17X3.5
	XA4-9170-409	F	2	SCREW M17x4
	XA4-9200-457	F	2	SCREW M2X4.5

CANON EOSD30

C18-1021





# PARTS LIST

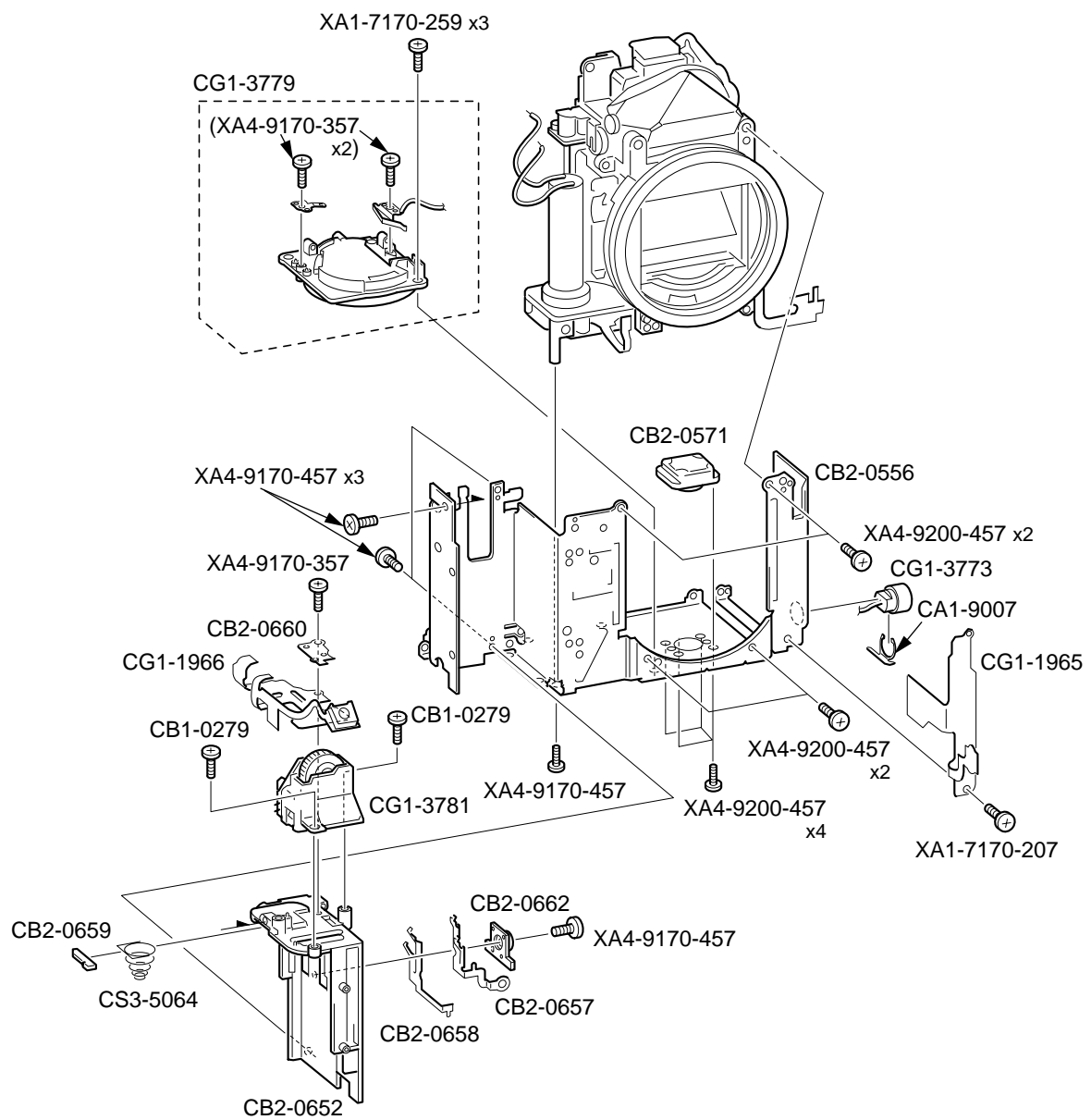
Pg12

REF.NO. C18-1021

NEW	PARTS NO.	CLASS	QTY	DESCRIPTION
	CA1-9125-000	C	1	STOPPER, RT CONNECTOR
	CB1-7756-000	C	1	CONNECTOR, REMOTE
*	CB2-0557-000	C	1	BODY, LEFT
*	CG1-1970-000	C	1	FPC ASS'Y, REMOTE
*	CH1-6870-000	C	1	FPC (DE-SP LIGHT)
*	CH9-0321-000	C	1	PCB ASS'Y, SP LIGHT
	XA4-8200-459	F	2	SCREW M2X4.5
	XA4-9170-357	F	1	SCREW M17X3.5

## CANON EOSD30

C18-1021



# PARTS LIST

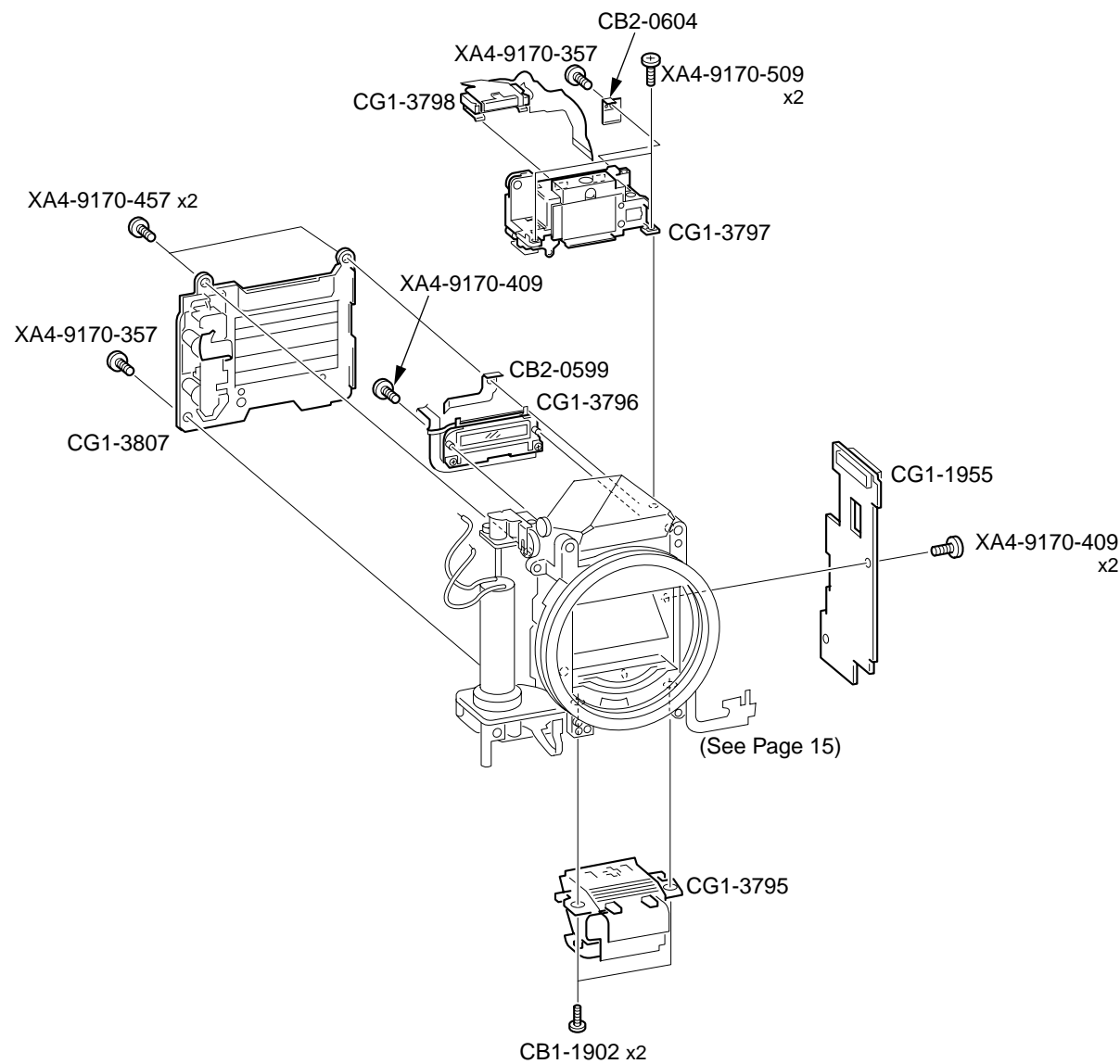
Pg13

REF.NO. C18-1021

NEW	PARTS NO.	CLASS	QTY	DESCRIPTION
	CA1-9007-000	C	1	STOPPER, PC TERMINAL
*	CB1-0279-000	C	2	SCREW M17X4.5
*	CB2-0556-000	C	1	BODY, FRONT
*	CB2-0571-000	C	1	SOCKET, TRIPOD
*	CB2-0652-000	C	1	CASE, MAIN BATTERY
*	CB2-0657-000	C	1	CONTACT, BATTERY 1
*	CB2-0658-000	C	1	CONTACT, BATTERY 2
*	CB2-0659-000	C	1	HOLDER, BATTERY SPRING
*	CB2-0660-000	C	1	PLATE, SW HOLDER
*	CB2-0662-000	C	1	HOLDER, CONTACT
*	CG1-1965-000	C	1	FPC ASS'Y, FRONT
*	CG1-1966-000	C	1	FPC ASS'Y, RELEASE
*	CG1-3773-000	C	1	TERMINAL ASS'Y, PC
*	CG1-3779-000	C	1	CASE ASS'Y, DATE BATTERY
*	CG1-3781-000	C	1	MAIN DIAL ASS'Y
*	CS3-5064-000	C	1	SPRING, COIL
	XA1-7170-207	F	1	SCREW M17X2
	XA1-7170-259	F	3	SCREW M17X2.5
	XA4-9170-357	F	3	SCREW M17X3.5
	XA4-9170-457	F	5	SCREW M17X4.5
	XA4-9200-457	F	8	SCREW M2X4.5

CANON EOSD30

C18-1021



# PARTS LIST

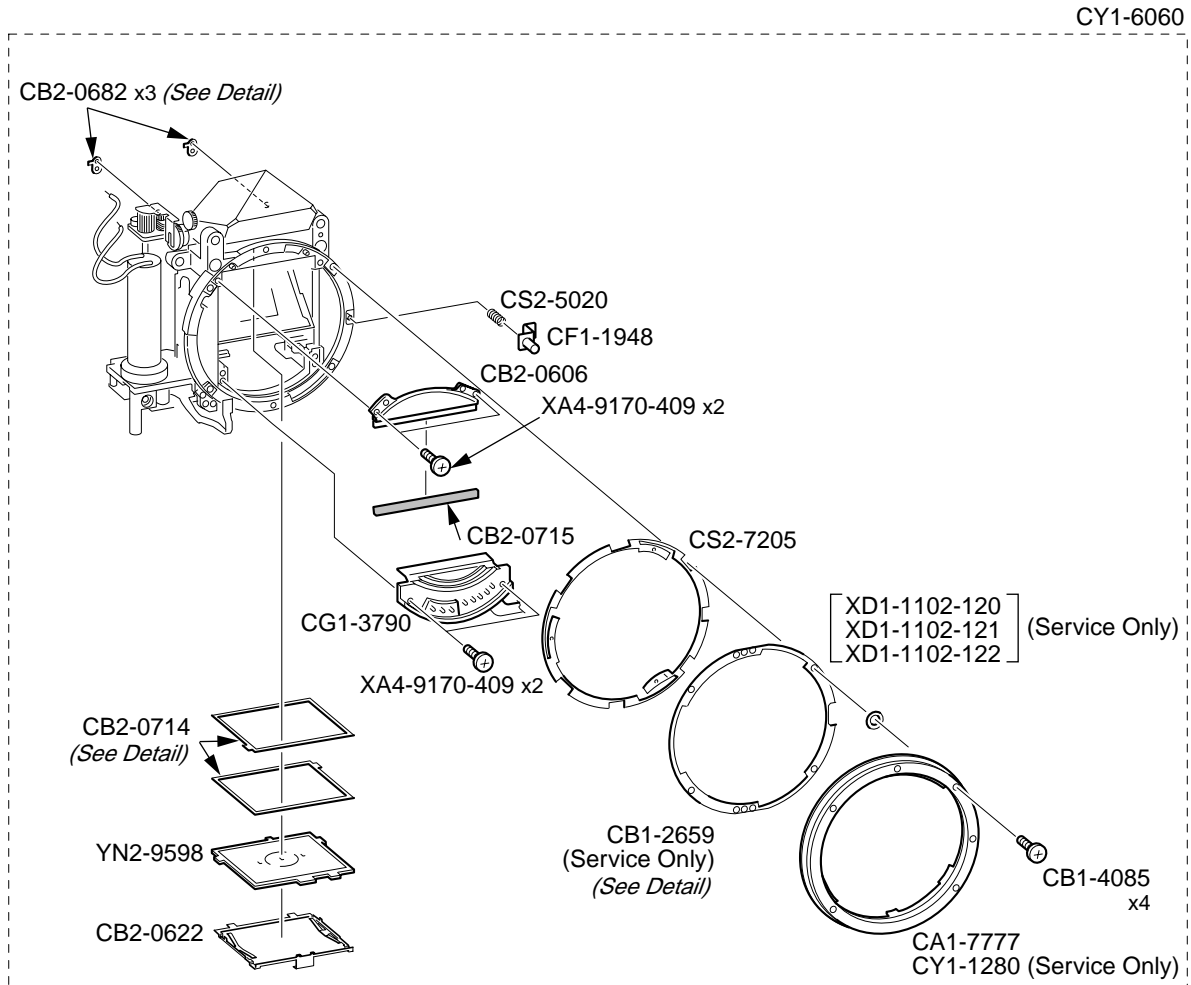
Pg14

REF.NO. C18-1021

NEW	PARTS NO.	CLASS	QTY	DESCRIPTION
*	CB1-1902-000	C	2	SCREW M17X4
*	CB2-0599-000	C	1	SPRING, PLATE
*	CB2-0604-000	C	1	SPRING, PLATE
*	CG1-1955-000	C	1	PCB ASS'Y, CAMERA MAIN
*	CG1-3795-000	C	1	AUTO FOCUS ASS'Y
*	CG1-3796-000	C	1	VF LCD ASS'Y
*	CG1-3797-000	C	1	EYEPIECE LENS ASS'Y
*	CG1-3798-000	C	1	SPC SENSOR ASS'Y
*	CG1-3807-000	E	1	SHUTTER ASS'Y
	XA4-9170-357	F	2	SCREW M17X3.5
	XA4-9170-409	F	3	SCREW M17x4
	XA4-9170-457	F	2	SCREW M17X4.5
	XA4-9170-509	F	2	SCREW M17X5

# CANON EOSD30

C18-1021



CB2-0682-000 (XXX) detail

A	SIZE
0.03 mm (003)	
0.05 mm (005)	
0.08 mm (008)	
0.10 mm (010)	
0.12 mm (012)	
0.15 mm (015)	
0.18 mm (018)	
0.20 mm (020)	

CB1-2659-000 (XXX) detail

B	SIZE
0.05 mm (005)	
0.08 mm (008)	
0.10 mm (010)	
0.12 mm (012)	
0.15 mm (015)	
0.18 mm (018)	

CB2-0714-000 (XXX) detail

C	SIZE
0.05 mm (005)	
0.10 mm (010)	
0.15 mm (015)	
0.20 mm (020)	
0.25 mm (025)	
0.30 mm (030)	
0.35 mm (035)	
0.40 mm (040)	
0.45 mm (045)	
0.50 mm (050)	

# PARTS LIST

Pg15

REF.NO. C18-1021

NEW	PARTS NO.	CLASS	QTY	DESCRIPTION	REMARKS
	CA1-7777-000	C	1	MOUNT, BODY	
	CB1-2659-000 (XXX)	C	1	SPACER, MOUNT	
	CB1-4085-000	C	4	SCREW M2X6.5	
*	CB2-0606-000	C	1	COVER, MIRROR BOX	
*	CB2-0622-000	C	1	SPRING, SCREEN	
*	CB2-0682-000 (XXX)	C	3	WASHER, FB ADJ.	
*	CB2-0714-000 (XXX)	C	1	WASHER, SCREEN ADJ.	QTY 1 or 2
*	CB2-0715-000	C	1	CUSHION	
	CF1-1948-000	C	1	LEVER, LENS LOCK	
*	CG1-3790-000	C	1	CONTACT ASS'Y, LENS MOUNT	
	CS2-5020-000	C	1	SPRING, COIL	
	CS2-7205-000	C	1	SPRING, MOUNT	
	CY1-1280-000	C	1	MOUNT, BODY (0.1mm under)	
*	CY1-6060-000	C	1	MIRROR BOX ASS'Y	
	XA4-9170-409	F	4	SCREW M17x4	
	XD1-1102-120	F	1	WASHER (0.05mm)	
	XD1-1102-121	F	1	WASHER (0.1mm)	
	XD1-1102-122	F	1	WASHER (0.2mm)	
*	YN2-9598-000	C	1	SCREEN, FOCUSING	

## ELECTRIC PARTS LIST

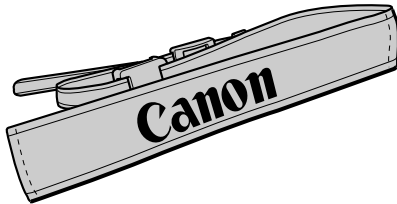
REF.NO. C18-1021

NEW	PARTS NO.	CLASS	QTY	DESCRIPTION	
*	CY4-6068-000	D	1	FUSE 32V/3A	
*	Y11-3901-000	C	1	LEAD (WHITE)	7 CORES/0.6mm
*	Y11-3902-000	C	1	LEAD (BLACK)	7 CORES/0.6mm
*	Y11-3903-000	C	1	LEAD (RED)	7 CORES/0.6mm
*	Y11-3906-000	C	1	LEAD (PINK)	7 CORES/0.6mm
*	Y11-3907-000	C	1	LEAD (YELLOW)	7 CORES/0.6mm
*	Y11-3909-000	C	1	LEAD (GREEN)	7 CORES/0.6mm
*	Y11-3914-000	C	1	LEAD (GRAY)	7 CORES/0.6mm
*	Y11-5002-000	C	1	LEAD (BLACK)	30 CORES/1.2mm
*	Y11-5003-000	C	1	LEAD (RED)	30 CORES/1.2mm
*	Y11-5006-000	C	1	LEAD (PINK)	30 CORES/1.2mm
*	Y11-5011-000	C	1	LEAD (BLUE)	30 CORES/1.2mm
*	Y11-5014-000	C	1	LEAD (GRAY)	30 CORES/1.2mm



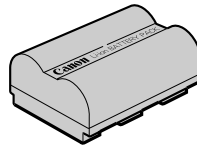
## Accessories Section

**Strap  
(with eyepiece cover)**



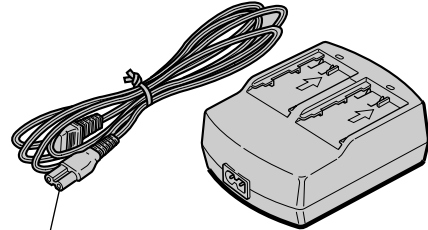
N.S (Product Available)

**Battery Pack BP-511**



N.S (Product Available)

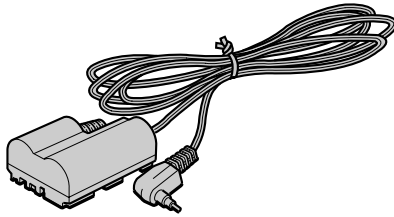
**Compact Power Adapter  
CA-PS400**



N.S (Product Available)

WT3-5062  
WT3-5063  
WT3-5064  
WT3-5115  
WT3-5066

**DC Coupler DR-400**



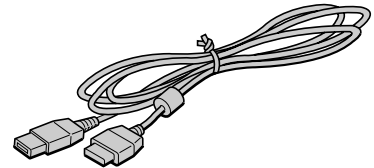
N.S (Product Available)

**CompactFlash Card  
FC-16M**



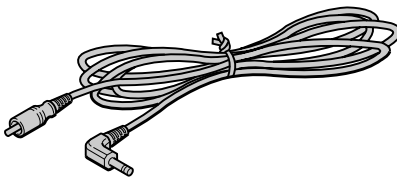
N.S (Product Available)

**Interface Cable  
IFC-200 PCU**



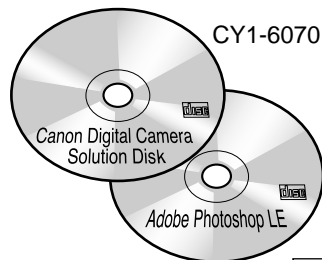
N.S (Product Available)

**Video Cable VC-100**



N.S (Product Available)

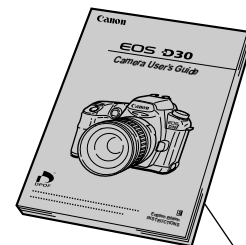
**Canon Digital Camera  
Solution Disk, Adobe  
Photoshop LE Disk**



CY1-6070

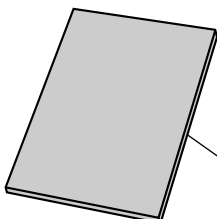
N.S

**EOS D30 Camera User's  
Guide (this document)**



CDI-J007-010  
CDI-E008-010  
CDI-F007-010

**Software Starter Guide**



CDI-J008-010  
CDI-E009-010  
CDI-F008-010

## P A R T S   L I S T

NEW	PARTS NO.	CLASS	DESCRIPTION	REMARKS
	WT3-5062-000	C	CABLE, AC (JPN)	FOR JAPAN
	WT3-5063-000	C	CABLE, AC (USA)	FOR USA, CANADA
	WT3-5064-000	C	CABLE, AC (EUR)	FOR EUROPE, ASIA
*	WT3-5115-000	C	CABLE, AC (UK)	FOR ASIA
	WT3-5066-000	C	CABLE, AC (AUSTRALIA)	FOR AUSTRALIA
*	CY1-6070-000	S	CD-ROM, D30 SOLUTION DISK	Except EUROPE
*	CDI-J007-010	S	CAMERA USER GUIDE (J)	FOR JAPAN
*	CDI-E008-010	S	CAMERA USER GUIDE (E)	FOR USA, CANADA, EUROPE, ASIA, AUSTRALIA
*	CDI-F007-010	S	CAMERA USER GUIDE (F)	FOR CANADA
*	CDI-J008-010	S	SOFTWARE GUIDE (J)	FOR JAPAN
*	CDI-E009-010	S	SOFTWARE GUIDE (E)	FOR USA, CANADA, EUROPE, ASIA, AUSTRALIA
*	CDI-F008-010	S	SOFTWARE GUIDE (F)	FOR CANADA

# INDEX OF PARTS LIST

Pg18

REF.NO. C18-1021

NEW	PARTS NO.	PAGE	NEW	PARTS NO.	PAGE
	CA1-2474-000	1	*	CB2-0601-000	6
	CA1-7777-000	15	*	CB2-0604-000	14
	CA1-9007-000	13	*	CB2-0606-000	15
	CA1-9125-000	12	*	CB2-0614-000	5
*	CB1-0279-000	13	*	CB2-0615-000	5
*	CB1-1902-000	14	*	CB2-0622-000	15
	CB1-2659-000 (XXX)	15	*	CB2-0629-000	4
	CB1-2678-000	4	*	CB2-0630-000	4
	CB1-4085-000	15	*	CB2-0637-000	4
	CB1-6588-000	6	*	CB2-0639-000	4
	CB1-6589-000	6	*	CB2-0640-000	6
	CB1-7756-000	12	*	CB2-0652-000	13
	CB1-7757-000	1	*	CB2-0654-000	5
*	CB2-0551-000	6	*	CB2-0657-000	13
*	CB2-0552-000	6	*	CB2-0658-000	13
*	CB2-0554-000	6	*	CB2-0659-000	13
*	CB2-0555-000	7	*	CB2-0660-000	13
*	CB2-0556-000	13	*	CB2-0661-000	5
*	CB2-0557-000	12	*	CB2-0662-000	13
*	CB2-0558-000	11	*	CB2-0666-000	1
*	CB2-0559-000	1	*	CB2-0670-000	10
*	CB2-0560-000	6	*	CB2-0680-000	1
*	CB2-0564-000	7	*	CB2-0681-000	5
*	CB2-0565-000	7	*	CB2-0682-000 (XXX)	15
*	CB2-0566-000	6	*	CB2-0684-000	5
*	CB2-0568-000	1	*	CB2-0686-000	1
*	CB2-0570-000	7	*	CB2-0687-000	5
*	CB2-0571-000	13	*	CB2-0696-000	10
*	CB2-0573-000	7	*	CB2-0714-000 (XXX)	15
*	CB2-0576-000	7	*	CB2-0715-000	15
*	CB2-0577-000	7	*	CB2-0719-000	1
*	CB2-0578-000	7	*	CB2-0720-000	1
*	CB2-0587-000	6	*	CB2-0721-000	3
*	CB2-0589-000	1	*	CB2-0721-000	5
*	CB2-0599-000	14	*	CB2-0722-000	5

## INDEX OF PARTS LIST

REF.NO. C18-1021

NEW	PARTS NO.	PAGE	NEW	PARTS NO.	PAGE
*	CB2-0723-000	5	*	CG1-3785-000	2
*	CB2-0724-000	3	*	CG1-3786-000	1
*	CB2-0726-000	2	*	CG1-3790-000	15
*	CB2-0727-000	2	*	CG1-3795-000	14
*	CB2-1371-000	9	*	CG1-3796-000	14
*	CB2-1372-000	9	*	CG1-3797-000	14
*	CB2-1373-000	9	*	CG1-3798-000	14
*	CDI-E008-010	17	*	CG1-3800-000	4
*	CDI-E009-010	17	*	CG1-3807-000	14
*	CDI-F007-010	17	*	CH1-6863-000	9
*	CDI-F008-010	17	*	CH1-6864-000	9
*	CDI-J007-010	17	*	CH1-6865-000	9
*	CDI-J008-010	17	*	CH1-6870-000	12
	CF1-1948-000	15	*	CH2-5298-000	6
*	CF1-3851-000	7	*	CH2-5299-000	6
*	CF1-3855-000	1	*	CH9-0321-000	12
*	CF1-3856-000	11	*	CH9-0322-000	11
*	CG1-1955-000	14		CS2-5020-000	15
*	CG1-1956-000	10		CS2-5656-000	6
*	CG1-1957-000	8		CS2-7205-000	15
*	CG1-1958-000	9	*	CS3-5064-000	13
*	CG1-1963-000	4	*	CS3-5071-000	4
*	CG1-1964-000	11	*	CS3-6164-000	5
*	CG1-1965-000	13		CY1-1280-000	15
*	CG1-1966-000	13	*	CY1-6060-000	15
*	CG1-1967-000	9	*	CY1-6061-000	10
*	CG1-1968-000	9	*	CY1-6062-000	8
*	CG1-1969-000	4	*	CY1-6063-000	1
*	CG1-1970-000	12	*	CY1-6064-000	10
*	CG1-3773-000	13	*	CY1-6070-000	17
*	CG1-3774-000	6		FC2-9551-000	7
*	CG1-3777-000	8		FC2-9551-000	9
*	CG1-3779-000	13		WT3-5062-000	17
*	CG1-3781-000	13		WT3-5063-000	17
*	CG1-3782-000	9		WT3-5064-000	17

# INDEX OF PARTS LIST

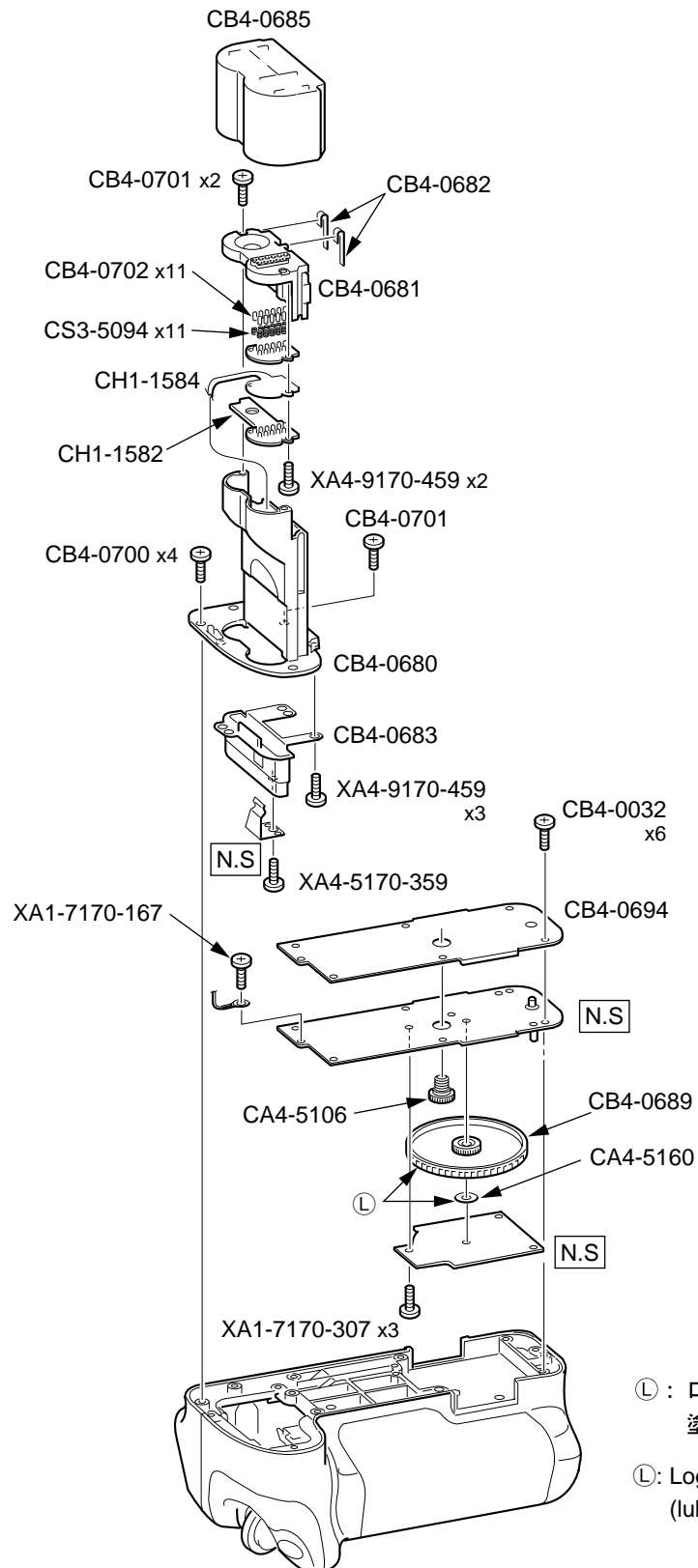
Pg20

REF.NO. C18-1021

NEW	PARTS NO.	PAGE	NEW	PARTS NO.	PAGE
	WT3-5066-000	17		XA4-9170-409	11
*	WT3-5115-000	17		XA4-9170-409	14
	XA1-3170-207	1		XA4-9170-409	15
	XA1-3200-257	7		XA4-9170-457	8
	XA1-7170-207	9		XA4-9170-457	10
	XA1-7170-207	13		XA4-9170-457	13
	XA1-7170-259	7		XA4-9170-457	14
	XA1-7170-259	13		XA4-9170-509	5
	XA1-7170-309	10		XA4-9170-509	6
	XA1-7170-357	9		XA4-9170-509	14
	XA1-7200-307	5		XA4-9200-457	6
	XA1-7200-307	9		XA4-9200-457	7
	XA1-7200-359	2		XA4-9200-457	11
	XA1-7200-359	5		XA4-9200-457	13
	XA4-5140-357	4		XA4-9200-559	7
	XA4-5170-407	9		XD1-1102-120	15
	XA4-6170-409	6		XD1-1102-121	15
	XA4-8200-459	7		XD1-1102-122	15
	XA4-8200-459	12		XD2-1100-132	4
	XA4-9170-357	4		XD2-1100-132	6
	XA4-9170-357	6		XD2-1100-172	2
	XA4-9170-357	8		XG8-1100-591	4
	XA4-9170-357	11	*	YN2-9598-000	15
	XA4-9170-357	12			
	XA4-9170-357	13			
	XA4-9170-357	14			
	XA4-9170-409	4			
	XA4-9170-409	5			
	XA4-9170-409	8			
	XA4-9170-409	9			

## CANON BG-ED3

C59-4001



# PARTS LIST

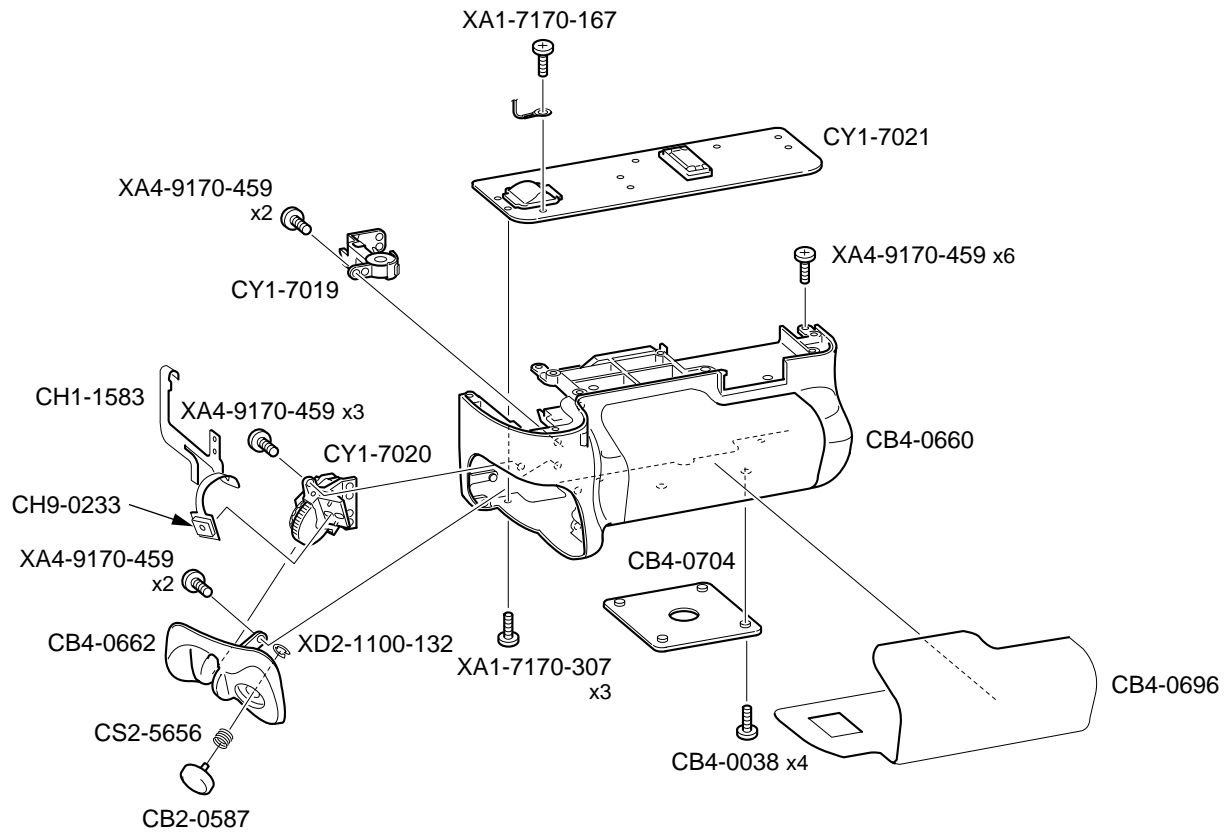
Pg21

REF.NO. C59-4001

NEW	PARTS NO.	CLASS	QTY	DESCRIPTION
	CA4-5106-000	C	1	SCREW, TRIPOD
	CA4-5160-000	C	1	WASHER, SPRING
*	CB4-0032-000	C	6	SCREW M17X5
*	CB4-0680-000	B	1	BASE, CONTACT
*	CB4-0681-000	B	1	COVER, CONTACT TOP
*	CB4-0682-000	C	2	TERMINAL, POWER
*	CB4-0683-000	B	1	COVER, CONTACT BOTTOM
*	CB4-0685-000	B	1	CAP, TERMINAL
*	CB4-0689-000	C	1	DIAL, TRIPOD
*	CB4-0694-000	C	1	COVER, TOP
*	CB4-0700-000	C	4	SCREW M17X4.5
*	CB4-0701-000	C	3	SCREW M17X6.5
*	CB4-0702-000	C	11	CONTACT, PIN
*	CH1-1582-000	C	1	PCB, CONTACT
*	CH1-1584-000	C	1	FPC, CONTACT
*	CS3-5094-000	C	11	SPRING, CONTACT
	XA1-7170-167	F	1	SCREW M17X1.6
	XA1-7170-307	F	3	SCREW M17X3.0
	XA4-5170-359	F	1	SCREW M17X3.5
	XA4-9170-459	F	5	SCREW M17X4.5

## CANON BG-ED3

C59-4001





# PARTS LIST

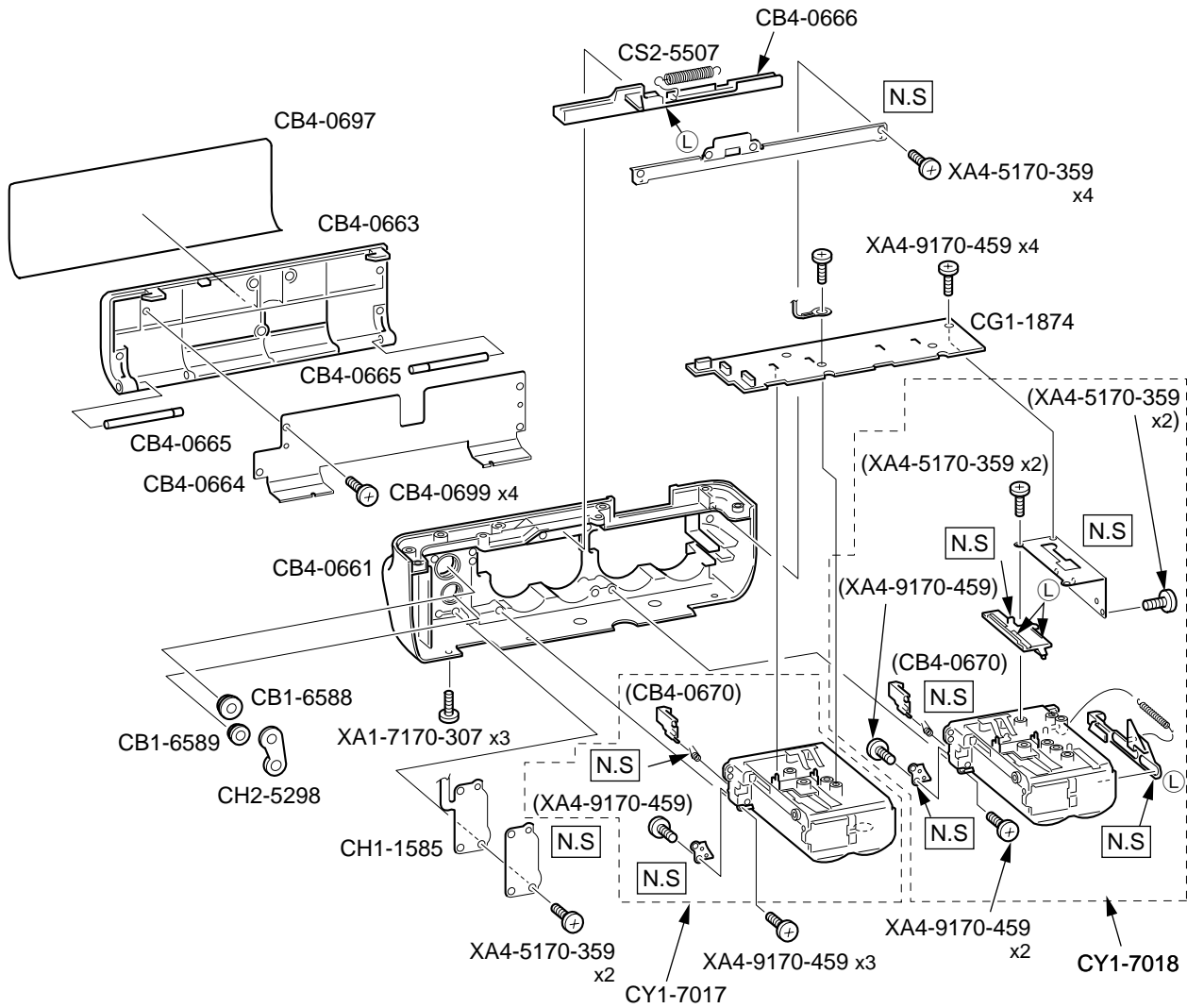
Pg22

REF.NO. C59-4001

NEW	PARTS NO.	CLASS	QTY	DESCRIPTION
*	CB2-0587-000	C	1	BUTTON, RELEASE
*	CB4-0038-000	C	4	SCREW M17X3
*	CB4-0660-000	B	1	CASE, FRONT
*	CB4-0662-000	B	1	COVER, RELEASE
*	CB4-0696-000	B	1	LEATHER, MAIN
*	CB4-0704-000	B	1	COVER, TRIPOD SOCKET
*	CH1-1583-000	C	1	FPC, RELEASE
	CH9-0233-000	C	1	SWITCH, RELEASE
	CS2-5656-000	C	1	SPRING, COIL
*	CY1-7019-000	C	1	GRIP ON/OFF SWITCH ASS'Y
*	CY1-7020-000	C	1	DIAL ASS'Y
*	CY1-7021-000	C	1	BASE PLATE ASS'Y
	XA1-7170-167	F	1	SCREW M17X1.6
	XA1-7170-307	F	3	SCREW M17X3.0
	XA4-9170-459	F	13	SCREW M17X4.5
	XD2-1100-132	F	1	E RING

## CANON BG-ED3

C59-4001



Ⓐ : ロゲネストラムダA-74  
塗付位置

Ⓐ: Logenest Lambda A-74  
(lubricant applying point)

# PARTS LIST

Pg23

REF.NO. C59-4001

NEW	PARTS NO.	CLASS	QTY	DESCRIPTION
*	CB1-6588-000	C	1	BUTTON, AE-L
*	CB1-6589-000	C	1	BUTTON, AF-L
*	CB4-0661-000	B	1	CASE, REAR
*	CB4-0663-000	C	1	DOOR, BATTERY
*	CB4-0664-000	C	1	COVER, BATTERY DOOR
*	CB4-0665-000	C	2	SHAFT
*	CB4-0666-000	C	1	LEVER, BAT. DOOR
*	CB4-0670-000	C	2	LEVER, BAT. LOCK
*	CB4-0697-000	B	1	LEATHER, BATTERY DOOR
*	CB4-0699-000	C	4	SCREW M17X3.0
*	CG1-1874-000	C	1	PCB ASS'Y, MAIN
*	CH1-1585-000	C	1	FPC, REAR SW
*	CH2-5298-000	C	1	RUBBER, CONTACT
	CS2-5507-000	C	1	SPRING, COIL
*	CY1-7017-000	C	1	BATTERY BOX RIGHT ASS'Y
*	CY1-7018-000	C	1	BATTERY BOX LEFT ASS'Y
	XA1-7170-307	F	3	SCREW M17X3.0
	XA4-5170-359	F	10	SCREW M17X3.5
	XA4-9170-459	F	11	SCREW M17X4.5

## INDEX OF PARTS LIST

REF.NO. C59-4001

NEW	PARTS NO.	PAGE	NEW	PARTS NO.	PAGE
	CA4-5106-000	21	*	CH1-1582-000	21
	CA4-5160-000	21	*	CH1-1583-000	22
*	CB1-6588-000	23	*	CH1-1584-000	21
*	CB1-6589-000	23	*	CH1-1585-000	23
*	CB2-0587-000	22	*	CH2-5298-000	23
*	CB4-0032-000	21		CH9-0233-000	22
*	CB4-0038-000	22		CS2-5507-000	23
*	CB4-0660-000	22		CS2-5656-000	22
*	CB4-0661-000	23	*	CS3-5094-000	21
*	CB4-0662-000	22	*	CY1-7017-000	23
*	CB4-0663-000	23	*	CY1-7018-000	23
*	CB4-0664-000	23	*	CY1-7019-000	22
*	CB4-0665-000	23	*	CY1-7020-000	22
*	CB4-0666-000	23	*	CY1-7021-000	22
*	CB4-0670-000	23		XA1-7170-167	21
*	CB4-0680-000	21		XA1-7170-167	22
*	CB4-0681-000	21		XA1-7170-307	21
*	CB4-0682-000	21		XA1-7170-307	22
*	CB4-0683-000	21		XA1-7170-307	23
*	CB4-0685-000	21		XA4-5170-359	21
*	CB4-0689-000	21		XA4-5170-359	23
*	CB4-0694-000	21		XA4-9170-459	21
*	CB4-0696-000	22		XA4-9170-459	22
*	CB4-0697-000	23		XA4-9170-459	23
*	CB4-0699-000	23		XD2-1100-132	22
*	CB4-0700-000	21			
*	CB4-0701-000	21			
*	CB4-0702-000	21			
*	CB4-0704-000	22			
*	CG1-1874-000	23			